
Emerging opportunities for gas exploration in NSW

The NSW Government is seeking expressions of interest to explore for gas in frontier basins in the Far West.

NSW is prospective for gas

Gas will continue to play a critical role in providing secure, reliable and affordable energy in NSW.

Exploration is the first step to securing new domestic gas supply in the long term.

The Bancannia and Pondie Range troughs in the Far West of NSW are prospective for gas but further work is required to fully test the resource.

The NSW Government is inviting applications for gas exploration licences for these areas. This is the first time that new exploration licences for petroleum will be offered in NSW since 2014.

New areas released for petroleum exploration are to support future domestic gas supply. Future extraction following successful exploration will require producers to supply extracted gas to the domestic market.

A preliminary regional issues assessment reviewed the social, environmental and economic considerations associated with the release of these areas for exploration. This assessment found that the land associated with the release areas were not highly productive and used mainly for grazing purposes.

The release areas are also located in proximity to relevant infrastructure that could support future gas development, including links to rail and road transport and proximity to the Moomba to Sydney gas pipeline.

Applications received will be assessed under a competitive selection process based on financial, technical and management capability and proposed exploration activity to test resource potential in these frontier basins.

Any gas discovery that could lead to commercial extraction would require separate assessment and approval before it can move to production.

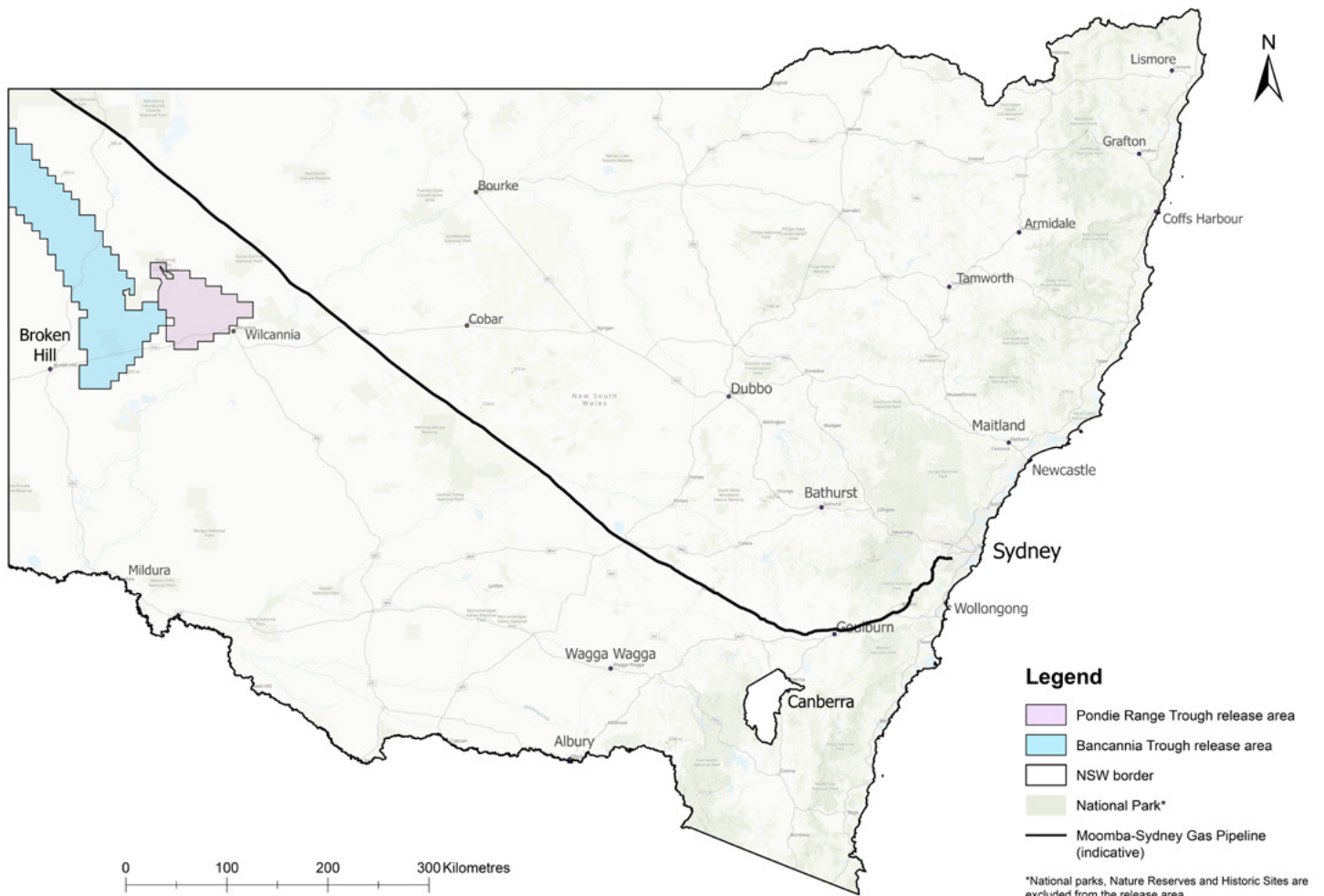
Proposals for new production will be assessed consistent with NSW's legislated emissions reduction targets and manage interactions with renewable energy projects and other land uses.

The impacts of exploration will be managed

There is a rigorous environmental assessment and land access framework to manage the impacts of exploration in NSW. Environmental impacts of exploration will be assessed under the comprehensive requirements of the *Environmental Planning and Assessment Act 1979*.

Explorers must have a land access arrangement in place before entering any land to undertake exploration. Explorers must engage with landholders in good faith to establish these arrangements with dispute resolution processes available under the *Petroleum (Onshore) Act 1991*.

In addition, explorers must comply with the *Exploration Code of Practice: Community Consultation*. These requirements ensure early, transparent and meaningful engagement with communities and landholders, including native title holders.



The NSW Government is developing its policy on the future of gas

The NSW Government has committed to updating the *Future of Gas Statement* and this expression of interest process will help inform a new position on gas.

Work is underway on the review which will outline the NSW Government's position on future gas exploration and production in the medium to long term, including by supporting new gas supply in NSW to strengthen energy security.

Enquiries

If you're an explorer and you have further queries, please email competitiverelease.petroleum@dpird.nsw.gov.au.

Detailed information on the release areas, including maps, data packages, guidelines, and regulatory requirements, is available at resources.nsw.gov.au/gas-exploration.

© State of New South Wales 2026. You may copy, distribute, display, download and otherwise freely deal with this publication for any purpose, provided that you attribute NSW Government as the owner. However, you must obtain permission if you wish to charge others for access to the publication (other than at cost); include the publication in advertising or a product for sale; modify the publication; or republish the publication on a website. You may freely link to the publication on a departmental website.

Disclaimer: The information contained in this publication is based on knowledge and understanding at the time of writing (April 2026) and may not be accurate, current or complete. The State of New South Wales, the author and the publisher take no responsibility, and will accept no liability, for the accuracy, currency, reliability or correctness of any information included in the document (including material provided by third parties). Readers should make their own inquiries and rely on their own advice when making decisions related to material contained in this publication.