

Safety Alert

Date: May 2025

Near miss between light vehicle and front-end loader

The hazards of operator distractions in open cut mines were highlighted when a light vehicle operator had to take evasive action to prevent a collision with a front-end loader.

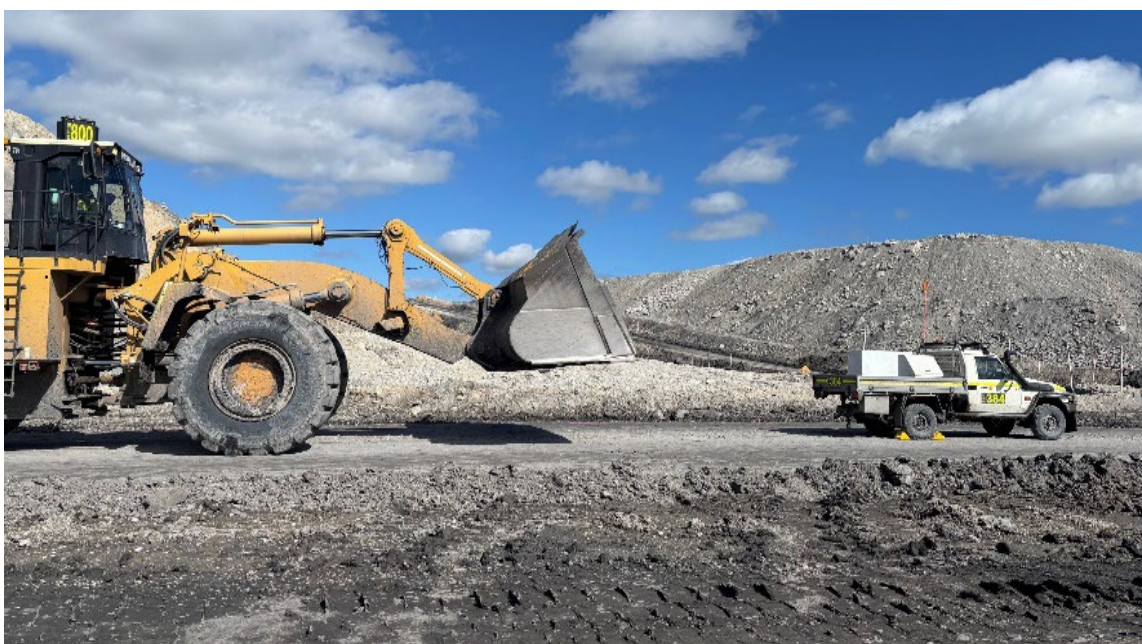
Circumstances

A front-end loader was travelling up a ramp approaching an intersection at about 10 km/h. The operator failed to identify a light vehicle with 2 occupants waiting to turn right at the intersection ahead of the loader.

As the loader approached the light vehicle from behind, the light vehicle operator became aware that the loader was about 10 – 15 m away and still travelling forwards. The light vehicle operator took evasive action, moving forward and left onto the haul road. This narrowly avoided the light vehicle being crushed by the loader, which could have resulted in serious injury or fatality to the light vehicle occupants.

The loader operator was unaware that the light vehicle was in its travel path and failed to stop, continuing through the intersection. It was not until the loader operator was contacted via the two-way that they became aware of the near miss event.

Figure 1: Incident re-enactment photo



Safety Alert SA25-01

Figure 2: Incident re-enactment photo



Investigation

- The light vehicle was found to be fitted with a flag and an operational flashing light.
- A re-enactment of the incident was completed.
- An Incident Cause Analysis Method (ICAM) based Investigation was completed.
- While approaching the intersection, the loader operator was distracted by using the two-way radio.
- The loader operator's visibility was restricted due to the position of the loader bucket.

Recommendations

- Equipment operators must maintain situational awareness at all times while operating mobile equipment and ensure that distractions do not interfere with safe operations
- Mine operators must have a structured, risk assessed approach to address adverse vehicle interactions and should review and consider all relevant resources available, including NSW Resources Regulator guidance material
- Sites are to investigate and where reasonably practicable implement light vehicle separation roadways and collision avoidance technologies
- Sites must include human and organisational factors in their vehicle interaction risk assessments.
- Defective equipment must be reported and not operated if the defect prohibits the safe operation of the equipment.

Note: Please ensure all relevant people in your organisation receive a copy of this safety alert and are informed of its content and recommendations. This safety alert should be processed in a

Safety Alert SA25-01

systematic manner through the mine’s information and communication process. It should also be placed on the mine’s common area, such as your notice board where appropriate.

Visit our [website](#) to:

- find more safety alerts and bulletins
- use our searchable safety database.

© State of New South Wales through the Department of Primary Industries and Regional Development 2025. You may copy, distribute, display, download and otherwise freely deal with this publication for any purpose, provided that you attribute the Department of Primary Industries and Regional Development as the owner. However, you must obtain permission if you wish to charge others for access to the publication (other than at cost); include the publication in advertising or a product for sale; modify the publication; or republish the publication on a website. You may freely link to the publication on a departmental website.

Disclaimer: The information contained in this publication is based on knowledge and understanding at the time of writing (May 2025) and may not be accurate, current or complete. The State of New South Wales (including Department of Primary Industries and Regional Development), the author and the publisher take no responsibility, and will accept no liability, for the accuracy, currency, reliability or correctness of any information included in the document (including material provided by third parties). Readers should make their own inquiries and rely on their own advice when making decisions related to material contained in this publication.

Document control	
CM10 reference	D25/4119
Mine safety reference	SA25-01
Date published	13 May 2025
Authorised by	Chief Inspector Office of the Chief Inspector