

Small mines high visibility campaign 2024

Summary

Small Mine Roadshow

February / March / April 2025



Small mines high visibility campaign

- A different approach for 2024
- A program tailored to small mines
- Review near fatality incidents at Tier 2 quarries
- Speaking with workers
- Focus on safety critical items around crushing and screening

Notices issued

NOTICE TYPE	TOTAL ISSUED	NUMBER OF SITES
s.195 prohibition notice	4	3
s.191 improvement notice	71	42
s.23 notice of concern	21	18
Total	96	52

Note: some mine sites were issued multiple notices

Summary of compliance notices

- Four s195 prohibition notices were issued to 3 small mine sites. The prohibition notices all identified missing, inadequate and poorly maintained guard rails on mobile plant (loaders and excavators) and fixed walkways on material screening plant to prevent fall from height.
- Many pre-start checklists for the crushing and screening circuits covered the entire plant with one pre-start and did not have a specific pre-start for sections of the plant.
- Some pre-start checklists covered the maintenance critical items that needed to be checked however did not consider the safety critical items (guards, warning devices, emergency stopping system) that need to be checked.
- Many workers were not formally trained in how to complete a pre-start on the crushing and screening circuits and did not know what action to be taken if a safety critical item was not operational.
- Many small mine sites had conveyor belts that needed to be tracked with the guards off.

Recommendations for mine operators

- Review the adequacy and maintenance of guard rails on mobile plant (loaders) and fixed walkways on material screening plant to prevent fall from height.
- Review the pre-start of their crushing and screening circuits to ensure that they are fit for purpose and cover all the safety critical items that need to be checked before operation of the plant.
- Train workers in how to complete the pre-start of their crushing and screening circuits and ensure workers are aware of which safety critical items mean that the plant cannot be operated till the issue is rectified.
- Review the tracking of belts on their sites considering the hierarchy of control and implement engineering controls to ensure worker are not exposed to the risk of entanglement.

Consolidated report

Mine safety high visibility campaign 2024



Questions

Small mines roadshow

Entanglement – amputated arm (Aug 2023)



Resources Regulator
Department of Regional NSW



Investigation information release

Date: September 2023

Serious injury of a worker performing maintenance work on a mobile screen

Incident date: 28 August 2023

Event: Serious injury of a worker while assisting with belt tracking of a mobile screen

Location: Mt Magometon Quarry

Overview

A worker assisting with tracking the belt on a mobile screen was seriously injured when his arm became entangled in the screen's rotating tail drum.

The mine

Mt Magometon Quarry is a hard rock quarry about 25 kilometres east of Coonamble in the central west of NSW. The quarry is operated by Coonamble Shire Council. Several workers, including the injured worker, are employed by a contracting company, which provides mobile crushing services to the quarry.

The incident

Two of the contractors' workers were tasked with conducting maintenance tasks on various mobile screens at the site. In the early afternoon, the workers advised their supervisor (managing director of the contractor) that they were going to track the belt on a mobile screen identified as screen 7. Their supervisor left the site to travel into Coonamble to pick up some items. The quarry operator's nominated quarry manager was not on site on the day of the incident. The 2 workers began tracking the belt on screen 7.

While undertaking the task, one of workers was in proximity of the right-hand side of the screen toward the rear of the item of plant. The screen was engaged with its conveyor operating. The worker's arm became entangled in the rotating tail drum of the screen, pulling the worker into the drum up to his shoulder.

An emergency response was activated. The injured worker was trapped for several hours until emergency services and a medical team released him. The worker's arm was amputated as a result of the incident. The worker was transported to the entrance of the quarry and then airlifted to hospital.

resourcesregulator.nsw.gov.au

Machine fire (Sept 2023)



Tyre explosion (Feb 2024)



Crush injury (Mar 2024)



Fall from height (Mar 2024)



Explosion (May 2024)

Two workers injured at Western Riverina Quarry

Incident date: 13 May 2024

Event: Two workers were injured during cone crusher maintenance work.

Location: Western Riverina Quarry, Rankins Springs

Overview

Two workers sustained burn injuries when cleaning fluid they were using ignited after a cordless battery-powered handheld blower was operated.

The incident

Two workers were changing the lubricating oil on a Nordberg HP300 cone crusher at approximately 11:50 am on 13 May 2024. The hydraulic/lubrication unit was located at the rear of the purpose-built shipping container, known at the site as the Crusher Lubrication Container. The container had limited ventilation.

Figure 1 Inside the Crusher Lubrication Container

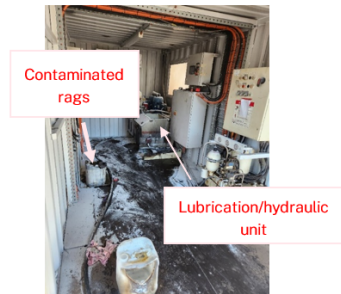


Figure 3 Brake cleaner handpump



Figure 4 Milwaukee battery-operated handheld blower



Operator engulfed in cab of excavator (June 2024)



Worker burnt refuelling a pump (Oct 2024)




Pump burnt refuelling (Nov 2024)



Maintenance worker runover (Dec 2024)

NSW Resources
Resources Regulator



Investigation information release

Date: December 2024

Worker suffers serious injuries while working under truck trailer

Incident date: 3 December 2024

Event: Worker suffers serious injuries while working under truck trailer

Location: Possum Brush Quarry, Possum Brush

Overview

A worker suffered multiple serious injuries when a truck trailer that he was working under rolled onto him.

The mine

Possum Brush Quarry is a hard rock quarry south of Taree on the Mid North Coast of NSW. The quarry has operated since 1987 and consists of extraction areas, a crushing and screening plant, workshops, weighbridge and administration areas. Access to the working area of the quarry is along its inbound access road, which slopes downward at a grade of about 5%. There are regular movements of road trucks and light vehicles along the inbound access road.

The task

A contract worker was tasked by his supervisor to drive a road-registered truck and trailer up the inbound access road to a laydown area. The truck configuration was an Isuzu 3 axle rigid with a dual axle, double-wheeled trailer. The front nearside wheelset of the trailer was locked on and was being dragged along the bitumen road surface as the truck travelled up the inbound haul road. The worker stopped the truck on the haul road and the quarry's manager entered the cabin to try and release the locked trailer brake. The quarry manager drove the truck a short distance but was unable to release the brake. He parked the truck on the side of the roadway and asked the quarry's mechanic to attend the location to release the trailer's brakes.

resources.nsw.gov.au

Figure 1: The truck and trailer involved in the incident



Investigation information release IIR24-12

Figure 2: The position of the vehicles following the incident



Figure 3: Collision between the trailer and the utility

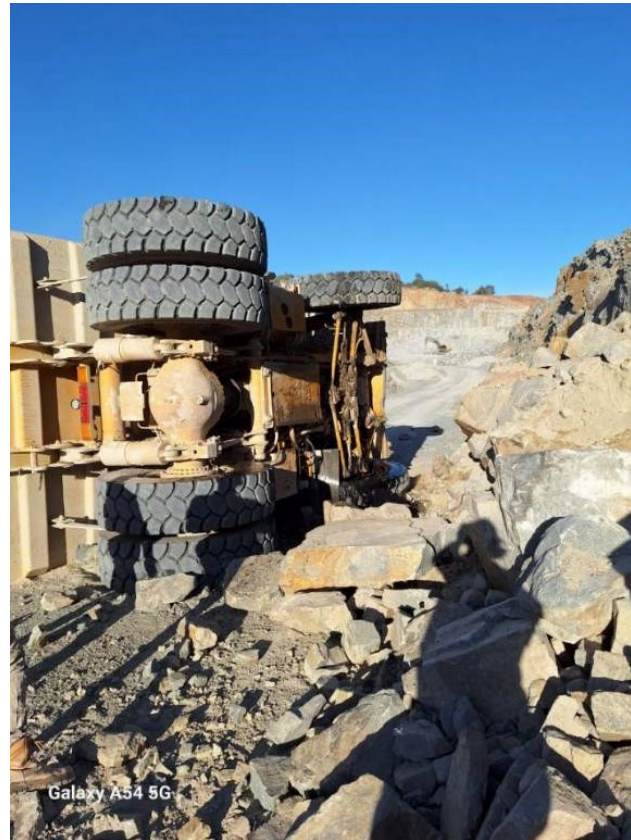


The mechanic was airlifted to John Hunter Hospital where he was admitted. He was treated for injuries to his collarbone, ribs, pelvis and leg - which included surgery.

Worker entangled in conveyor (Dec 2024)



Truck rollover (Dec 2024)



Questions?

Thank you